

→ AF 50S

silicon variant of AF 50

The **AF 50S facade system** is characterised by its high-level aesthetics and light build. This modern design perfectly complements office buildings by enhancing their attractiveness and class. This system allows for the use of slim, 20 mm multi-glazing. This solution influences thermal parameters so it is suitable for changeable weather.



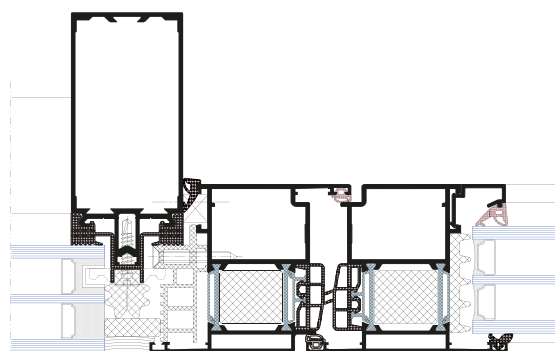
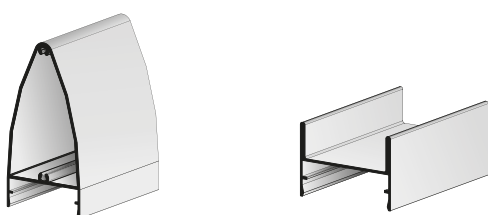
THREE WAYS OF GLAZING:

- point connection to embedded fasteners
- glued frame grip
- inner frame support
- possibility of creating vertical or horizontal lines

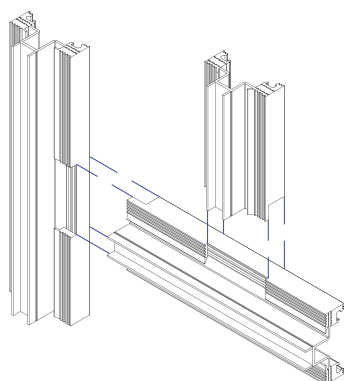
→ Selected parameters and system features

Glazing range	up to 62 mm
Windowless wall air permeability	AE 1650 Pa
Water tightness	RE 2500 Pa
Facade's thermal insulation U	from 0.56 W/m ² K
Glazing weight capacity	up to 500 kg
Inter glazing joint	20 mm
Lintel – sill strips are available with fire resistance	EI 30 i EI 60

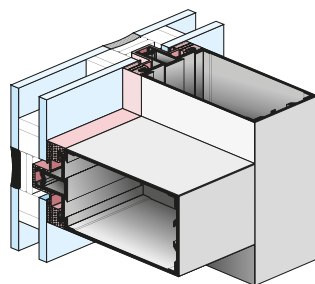
Profile shapes of external coverings



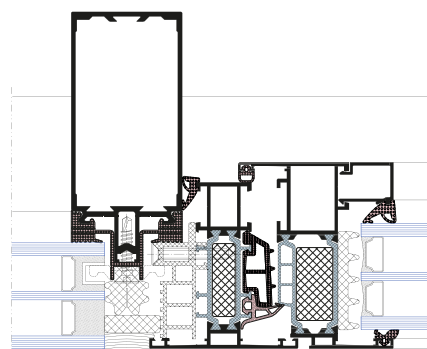
Facade and door connection



3-stage drainage with internal mullion gasket



Profile and gasket flushed on the inner side of the facade



Facade and window connection